

Project Update

THE ARTISE | OCTOBER 2023

ACTIVITY

This month, the following construction activity will be taking place:

- **Tuesday, Oct. 2 - Saturday, Oct. 7, and Saturday, Oct. 27:** A mobile crane will be operating on-site from 7 a.m. until 6 p.m. to erect the remaining building structure. There will be no impacts to traffic or pedestrians for this operation.
- **Saturday, Oct. 7:** The two left hand northbound lanes of 106th Ave NE between NE 6th St and NE 8th St will be closed from 7:00am to 6:00pm for crews to abandon exiting sewer connections. Northbound travel will be maintained in the right hand lane.
- **Saturday, Oct. 14:** Two eastbound lanes on NE 8th St between 106th Ave NE and 108th Ave NE will be closed from 7:00 a.m. to 6:00 p.m. while crews trench across NE 8th St for upgraded street lighting. Eastbound travel will be maintained in one lane at all times during this work.
- **Sunday, Oct. 15:** Two westbound lanes on NE 8th St between 106th Ave NE and 108th Ave NE will be closed from 7:00 a.m. to 6:00 p.m. while crews trench across NE 8th St for upgraded street lighting. Westbound travel will be maintained in one lane at all times during this work.
- **Saturday, Oct. 21:** There will be a full closure of northbound 106th Ave NE between NE 6th St and NE 8th St from 7:00 a.m. to 6:00 p.m. for crews to install a new storm water catch basin and discharge. Northbound traffic will be detoured to 108th Ave NE or Bellevue Way NE.
- Crews will continue placing new sidewalks on NE 8th St throughout the month. Pedestrian access will be progressively shifted to the new sidewalk as it becomes available. Access will continue to be established in a protected pathway when adjacent to ongoing work.
- Crews will continue to upgrade underground utility infrastructure on NE 8th St, near the intersection with 106th Ave NE.
- Pedestrian access will be maintained in a protected walkway.

Upcoming Lane Shifts and Sidewalk Closures:

- The center and right eastbound lanes of NE 8th Ave will remain closed during working hours throughout the month.
- The right turn lane, northbound on 106th Ave NE at NE 8th Ave will remain closed.
- The sidewalk on the east side of 106th Avenue NE will be closed between the south side of the building and NE 8th Street.
- A new sidewalk will be poured along NE 8th Street and pedestrian access will be allowed as it becomes available.



WORK HOURS

Monday - Friday: 7 a.m. to 6 p.m.

Saturday: 9 a.m. to 6 p.m.

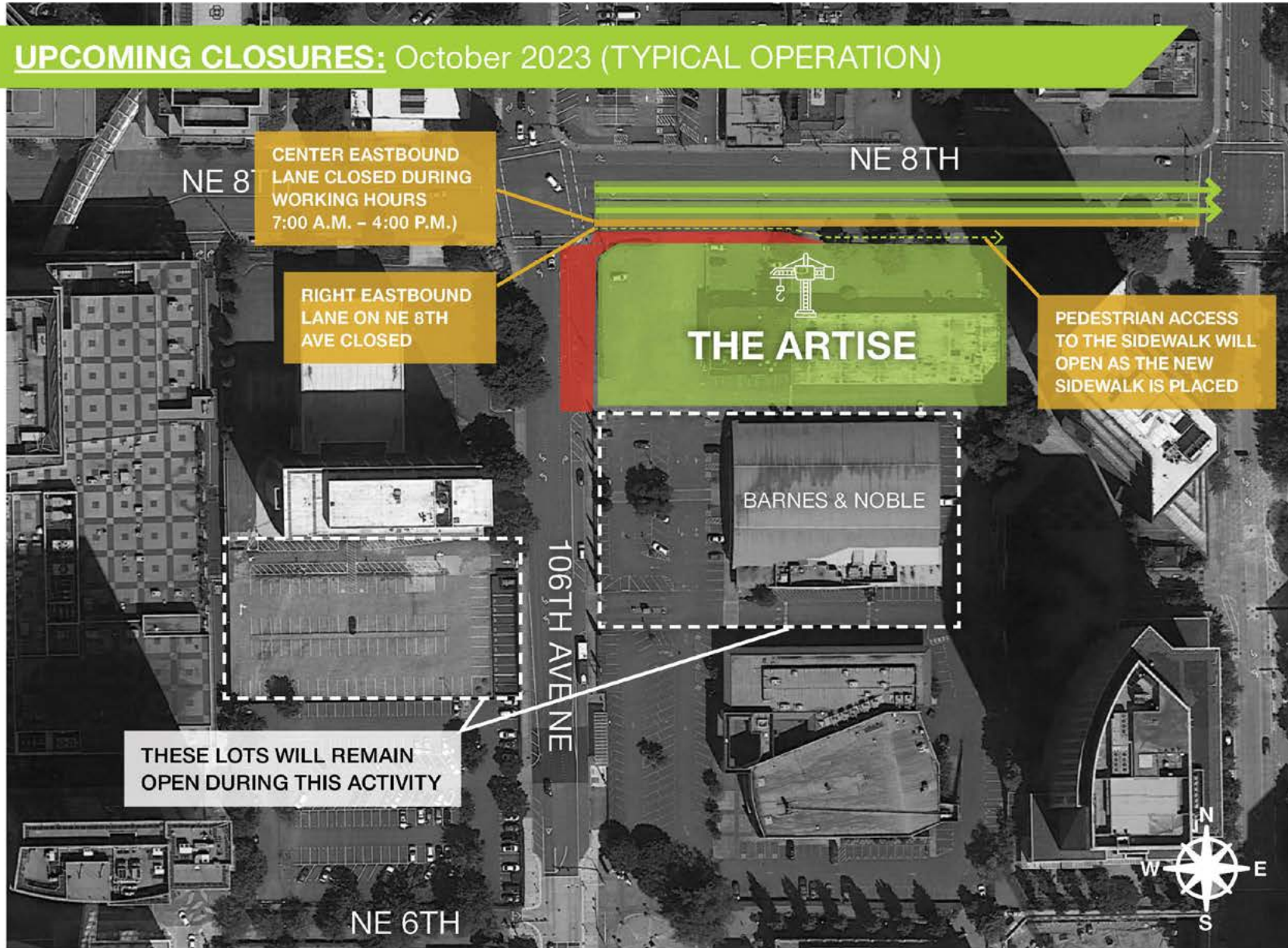


CONTACT US

For any traffic-related questions or concerns, please reach out to email Greg Doughty at gregd@sellen.com. For other general questions or concerns, email our project team at Artise@sellen.com.



UPCOMING CLOSURES: October 2023 (TYPICAL OPERATION)



CENTER EASTBOUND
LANE CLOSED DURING
WORKING HOURS
7:00 A.M. – 4:00 P.M.)

RIGHT EASTBOUND
LANE ON NE 8TH
AVE CLOSED

PEDESTRIAN ACCESS
TO THE SIDEWALK WILL
OPEN AS THE NEW
SIDEWALK IS PLACED

THESE LOTS WILL REMAIN
OPEN DURING THIS ACTIVITY

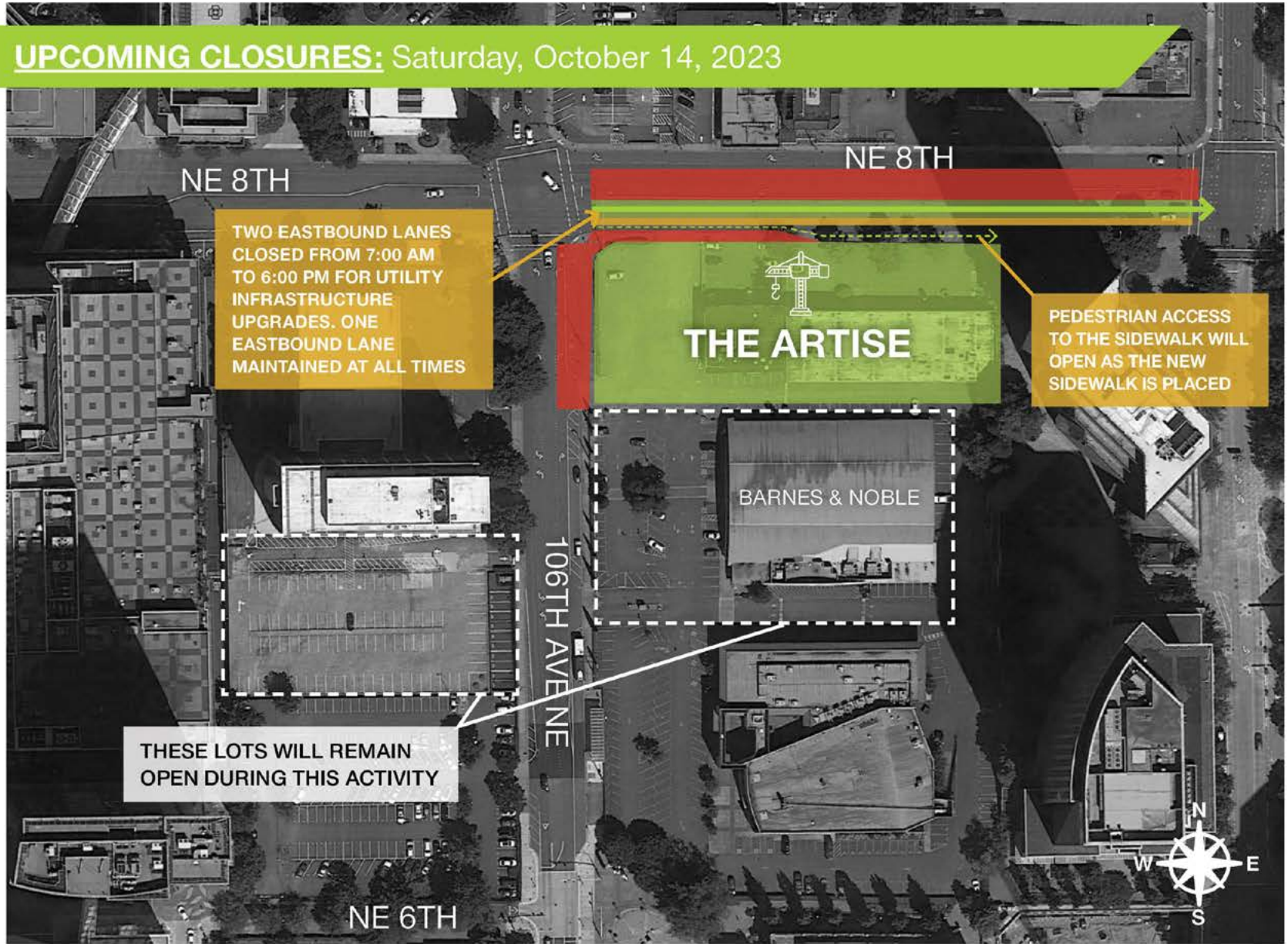


UPCOMING CLOSURES: Saturday, October 7, 2023





UPCOMING CLOSURES: Saturday, October 14, 2023



TWO EASTBOUND LANES
CLOSED FROM 7:00 AM
TO 6:00 PM FOR UTILITY
INFRASTRUCTURE
UPGRADES. ONE
EASTBOUND LANE
MAINTAINED AT ALL TIMES

PEDESTRIAN ACCESS
TO THE SIDEWALK WILL
OPEN AS THE NEW
SIDEWALK IS PLACED

THESE LOTS WILL REMAIN
OPEN DURING THIS ACTIVITY



UPCOMING CLOSURES: Sunday, Oct. 15, 2023



TWO WESTBOUND LANES CLOSED FROM 7:00AM TO 6:00PM FOR UTILITY UPGRADES. ONE WESTBOUND LANE OF TRAVEL MAINTAINED AT ALL TIMES.

RIGHT EASTBOUND LANE ON NE 8TH AVE CLOSED

NE 8TH

THE ARTISE

PEDESTRIAN ACCESS TO THE SIDEWALK WILL OPEN AS THE NEW SIDEWALK IS PLACED

BARNES & NOBLE

THESE LOTS WILL REMAIN OPEN DURING THIS ACTIVITY

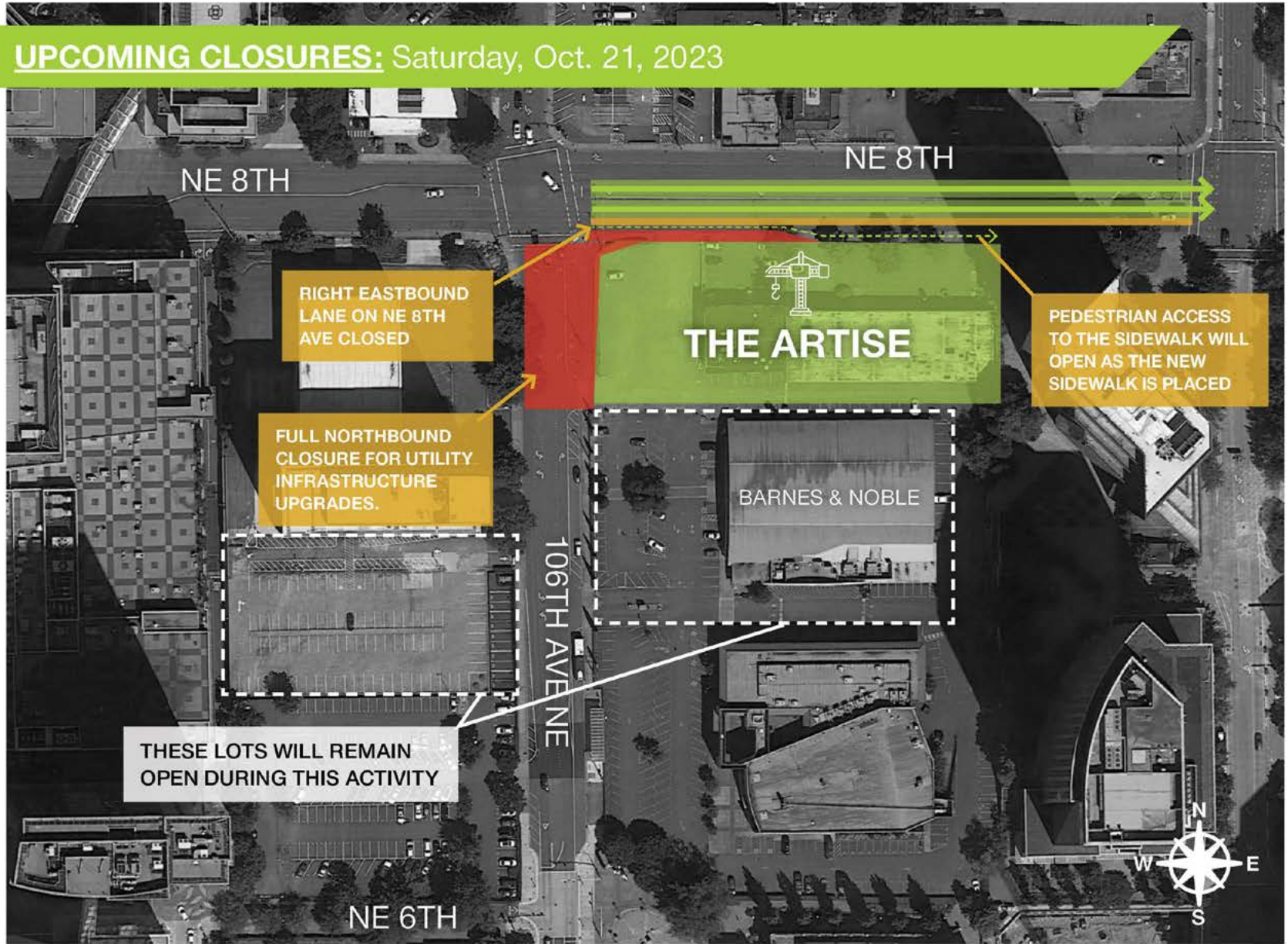
106TH AVENUE

NE 6TH





UPCOMING CLOSURES: Saturday, Oct. 21, 2023



NE 8TH

NE 8TH

RIGHT EASTBOUND
LANE ON NE 8TH
AVE CLOSED

FULL NORTHBOUND
CLOSURE FOR UTILITY
INFRASTRUCTURE
UPGRADES.

THESE LOTS WILL REMAIN
OPEN DURING THIS ACTIVITY

106TH AVENUE

THE ARTISE

BARNES & NOBLE

NE 6TH

PEDESTRIAN ACCESS
TO THE SIDEWALK WILL
OPEN AS THE NEW
SIDEWALK IS PLACED

